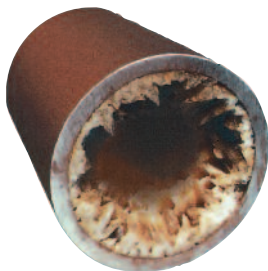


Watts® Anti-Scale Water Treatment Systems

The problem

Calcium creates scale in pipes, on appliances and other plumbing surfaces. This leads to higher heating and energy costs and expensive repairs to appliances, such as ice machines, coffee makers, dishwashers and cooling towers in commercial buildings.



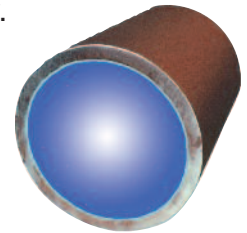
Scale can also be a source for bacteria to grow, which can be a health concern in drinking water applications.

Calcium, on the other hand, is important to human health, and supplements are recommended if Calcium is reduced or totally void in one's diet.



The solution

WATTS® Anti-Scale systems transform Calcium *ions* into Calcium *crystals*, which are stable and cannot attach to pipes, surfaces, hardware or heat exchanger components. The crystals are so small they are easily rinsed away by the water flow.



Benefits

- Scale is virtually eliminated!
- Aids in removing existing scale.
- No costly repairs to appliances due to scale.
- No salt.
- No brine tank.
- No backwash.
- Saves water!
- No electricity.
- Easy installation.

Note: For satisfactory results recommended flow rates and model sizing must be followed.

Residential models

| PART NUMBER | TANK SIZE (IN.) | TANK TYPE | PIPE SIZE (IN.) | MEDIA LITERS | GRAVEL LBS. | SERVICE FLOW GPM | FLOOR SPACE L X W X H (IN.) | SHIP WT. (LBS) |
|-------------|-----------------|-----------|-----------------|--------------|-------------|------------------|-----------------------------|----------------|
| M8408-RES | 8x35 | Vortech | 1" | 3.5 | NA | 10 | 11x11x42 | 30 |
| M8409-RES | 9x35 | Vortech | 1" | 4 | NA | 12 | 12x12x42 | 32 |
| M8410-RES | 10x54 | Vortech | 1" | 4.5 | NA | 15 | 13x13x61 | 37 |
| M8412-RES | 12x52 | Vortech | 1" | 6.5 | NA | 20 | 15x15x59 | 45 |
| M8413-RES | 13x54 | Vortech | 1" | 7.5 | NA | 25 | 15x15x61 | 51 |

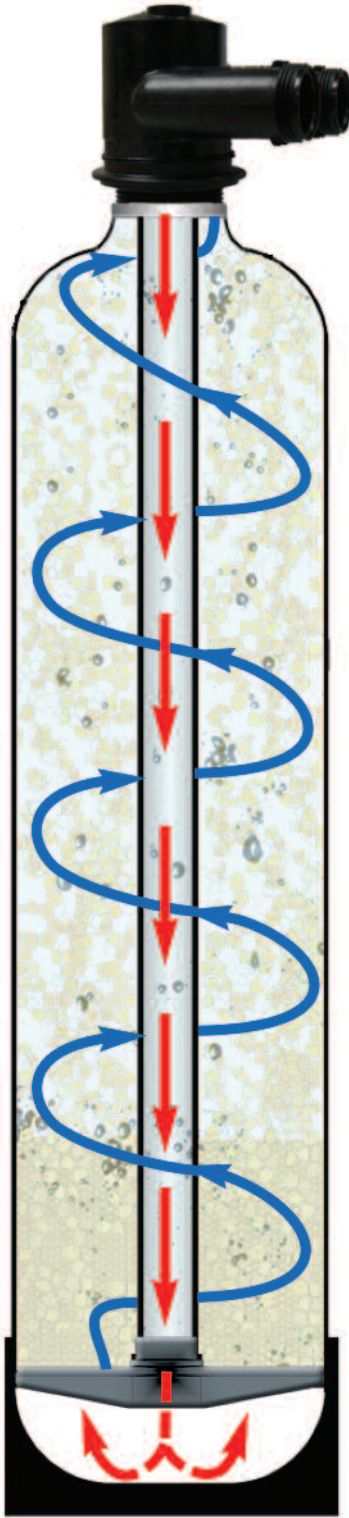
Note: By-pass valves are optional. KC11V3006 is optional by-pass valve for 1" systems. Maximum hardness is 25 grains per gallon at specified flow rates.

Commercial models

| Part Number | Tank Size (In.) | TANK TYPE | Pipe Size (In.) | Media Liters | Gravel Lbs. | Service Flow GPM | Floor Space L x W x H (In.) | Ship Wt. (lbs) |
|-------------|-----------------|-----------|-----------------|--------------|-------------|------------------|-----------------------------|----------------|
| M8409-COM | 9x35 | Vortech | 1" | 5.5 | NA | 12 | 12x12x42 | 32 |
| M8410-COM | 10x54 | Vortech | 1" | 6.25 | NA | 15 | 13x13x61 | 37 |
| M8412-COM | 12x52 | Vortech | 1" | 9.25 | NA | 20 | 15x15x59 | 45 |
| M8413-COM | 13x54 | Vortech | 1" | 11 | NA | 25 | 15x15x61 | 51 |
| M8414-COM | 14x65 | Vortech | 1" | 12.5 | NA | 30 | 15x15x72 | 77 |
| M8416-COM | 16x65 | Standard | 1.5" | 16.5 | 50 | 50 | 17x17x72 | 138 |
| M8421-COM | 21x62 | Standard | 1.5" | 28 | 100 | 70 | 22x22x69 | 250 |
| M8424-COM | 24x72 | Standard | 2" | 40 | 200 | 100 | 28x28x79 | 500 |

Note: Commercial systems designed for long runs and high usage. By-pass valves are optional. Maximum hardness is 25 grains per gallon at specified flow rates.





Proven results!

Lab tests conducted at the Watts test facility, located in San Antonio, Texas indicate ScaleNet™ anti-scale media virtually eliminates new scale formation and aids in the removal of existing scale. Tests were conducted in water temperatures to 120°F and hardness levels of 17 grains per gallon. Photos (below) show scale formation in untreated water and no scale in the ScaleNet treated water.



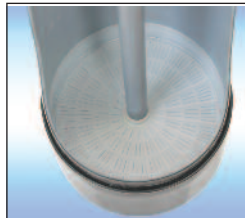
Scale Build-Up
(In untreated water).



No Scale!
(With ScaleNet treatment).

Specifications

| | |
|-------------|--|
| Matrix | Ceramic coated polymer. |
| Density | 1.1 to 1.2 lbs. per cubic foot |
| Weight | 650 g/L |
| Capacity | 1 liter per 3.0 gallons of flow (min.) |
| Lifetime | 3-5 years based on hardness and chlorine levels. |
| Temperature | 40°F minimum to 140°F maximum (4°C to 60°C) |
| pH | 6 to 9 (effective range) |



Vortech® tanks

Vortech tanks are used to provide increased contact time between the ScaleNet media and water for increased performance.

ScaleNet™ cartridges

We also supply cartridges with ScaleNet anti-scale media for low flow applications.

| PART NUMBER | SIZE | FLOW (MAX.) |
|-------------|-----------|-------------|
| SNC2510 | 2.5"x 10" | 1 gpm |
| SNC2520 | 2.5"x 20" | 2 gpm |
| SNC4520 | 4.5"x 20" | 4 gpm |



WATTS®
A Watts Water Technologies Company

Distributed by:

