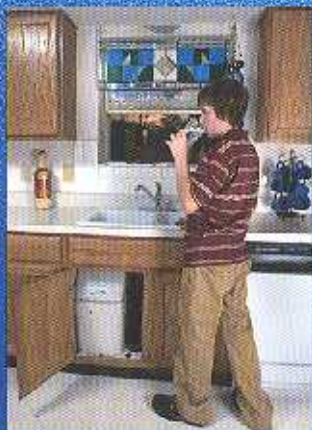


MicroBoss II[®]

water softener

**EFFICIENT
TECHNOLOGY
IN A
COMPACT
DESIGN!**

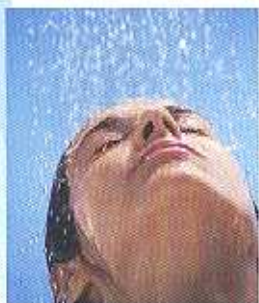


MicroBoss II[®] water softener

The Compact Whole House Water Treatment System Designed To Provide Families With Sparkling Soft, Great Tasting Water.

Taste the difference.

Enjoy the good natural taste of water. Clean, soft water makes a big difference in your life.



Feel the softness.

Gone are the hard water deposits that damage hair and the soap curd that blocks skin pores. Use less shampoo and other soap products in your home.

See the brightness.

You'll get cleaner, brighter, softer laundry when you wash with soft water.



EFFICIENT TECHNOLOGY IN A COMPACT DESIGN!

WHY PAY FOR HARD WATER?

An average family of four using approximately 277,000 liters of water per year accumulates "Rock Hard Scale" that builds up in all of your home's water using appliances.

120 mg/l Hard Water = 33 kg of Rock Per Year
7 gpg Hard Water = 73 lbs of Rock Per Year

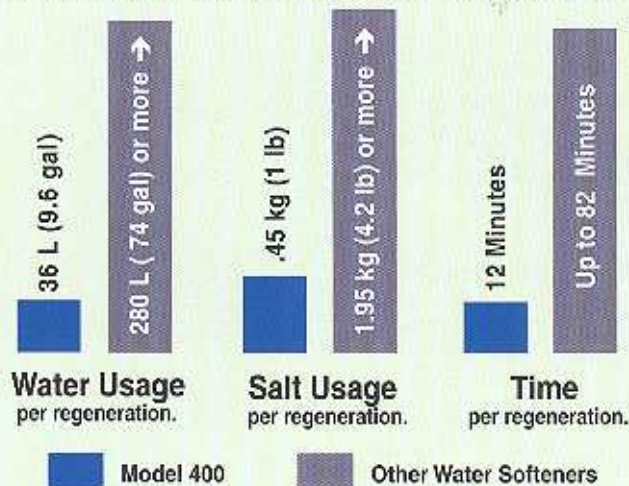


340 mg/l Hard Water = 95 kg of Rock Per Year
20 gpg Hard Water = 210 lbs of Rock Per Year



Compare the Savings with a *MicroBoss II*.

Our patented **High Efficiency Design** means you use less water, salt, and time compared to other conventional softeners.



Comprehensive Limited Warranty:
Ten years on tank and cabinet.
All mechanical parts including
electronic controls are covered
for three full years.



MODEL 400 PRODUCT FEATURES

Only the **MicroBoss[®]**, offers these exclusive features built into every patented high efficiency softener.

1 OPTIONAL BYPASS VALVE

Simply turn the dial to "BYPASS" so water does not enter the appliance. To return appliance to service, simply turn the dial to the SERVICE position.

2 SYSTEM CONTROLLER

Operates in three languages and retains cycle settings indefinitely, even through power outages. Time of day setting remains in memory for up to seven days without power.

3 WHOLE HOUSE, BUILT-IN, SELF CLEANING FILTER

Filters dirt and sediment down to 20 microns - smaller than the human eye can see. Plus, there's never any cartridges to change and no maintenance is required.

Eliminates the need for an in-line filter.



4 SAFETY SHUT-OFF SYSTEM

To help prevent the possibility of any overflows, **MicroBoss[®]** features a safety shutoff - just the kind of detail you would expect from **MicroBoss[®]**.

5 PATENTED MINERAL TANK

Our patented mineral tank with its screened distributor system, allows us to pack more resin in the tank and backwash our unit with clean soft water, therefore eliminating the need for a second mineral tank.

6 GRID PLATE

The grid plate in the segregated brine tank compartment provides a clear well area to ensure consistent brine concentration.



Standard 3/4" I/O connection shown.

EFFICIENT TECHNOLOGY IN A COMPACT DESIGN!

- Built-in, Salt And Water Saving Technology
- Low Profile Design
- Convenient Easy-Fill Salt Cabinet
- Quality Materials And Components
- Whisper Quiet 6 Cycle Valve
- Demand Mode - Regenerates Only When Needed
- Patented Capacity Guard - Never Run Out Of Soft Water
- Low Maintenance - Just Fill With Salt As Necessary
- Our Patented Packed Bed Mineral Tank Eliminates The Need For A Second Tank



MicroBoss II
water softener

MicroBoss II[®]

water softener



Compressed block salt is much easier to handle than those heavy bags of conventional salt.

The salt storage area is completely sealed off from the mineral tank compartment.



Optional Factory Installed Bypass Valve.



Patented Directional Flow Screen.



From our computerized solid state control to our exclusive directional flow screens, only the most advanced manufacturing processes and materials have been used to build the **MicroBoss II**. We employ the most innovative engineers in the industry to ensure that your softener will provide years of trouble-free water treatment in your home. And we have the patents to prove it.



9 US PATENTS
and other patents pending.

SOFTENER SPECIFICATIONS MODEL 400

Max. compensated hardness:	600 mg/L (35 grains per gallon)
Max. hardness removed:	610 grams (9400 grains)
Media amount:	11 liters (0.4 cu. ft.)
Minimum pH (standard units):	7
Salt used per regeneration:	0.5 - 0.9 - 1.4 kg, (1 - 2 - 3 lbs.)
Length of regeneration cycle:	12 - 15 - 18 minutes
Water used per regeneration:	36 - 44 - 50 liters (9.6 - 11.5 - 13.3 gallons)
Plumbing connections:	¾" or 1" NPT
Valve size:	1"
Salt storage capacity:	14 kg pellet (30 lbs. pellet salt) or 3x4 kg blocks
Electrical requirements:	220 VAC, 50 Hz (115 VAC, 60 Hz)
Max. water temperature:	48° C (120° F)
Water pressure (min., max. bar):	1.4, 8.3 bar (20,120 psi)
Footprint (WxD):	290 mm x 470 mm (11 ¼" x 18 ½")
Height:	550 mm (21½")
Shipping weight:	25 kg (55 lbs.)



EFFICIENT TECHNOLOGY IN A COMPACT DESIGN!

MicroBoss II[®] water softener



- In business since 1956
- Water treatment is our only business
- Built by the oldest major water treatment manufacturer under continuous ownership
- Made in the USA and sold throughout the world
- Every appliance we manufacture goes through total system testing

Operational maintenance and replacement requirements are essential for the product to perform to specification.

